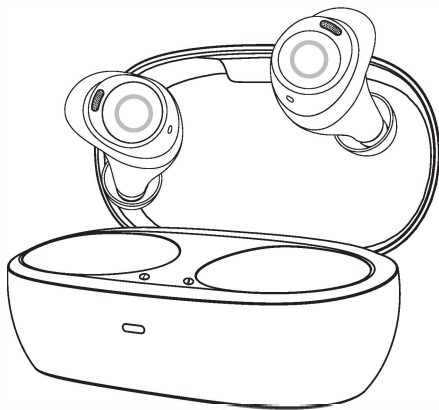


baseus



User Manual

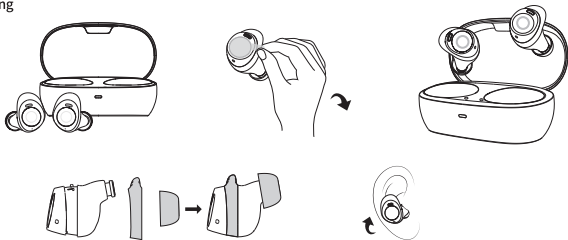
Baseus Bowie MA20 True Wireless Earphones



Please read this user manual carefully before use and keep it for future reference.

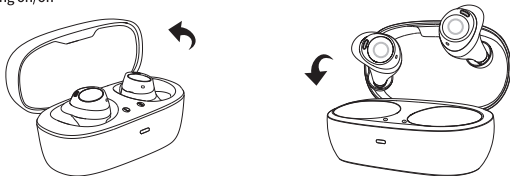
Quick Start Guide

① Wearing



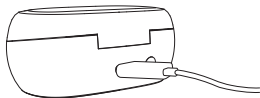
- Open the charging case and take out the earphones, tear off the insulation sticker of the earphones, put them into the charging case and fully charge them before use.
- Choose ear tips and ear hooks that match your ear shape, and adjust them to the most comfortable positions for wearing.

② Powering on/off



- When you open the charging case, the earphone indicators blink white and the earphones are powered on.
- When you place the earphones in the charging case and cover the lid, the earphones are powered off.

③ Charging



- Make sure the earphones are dry and tidy before charging them in the charging case.

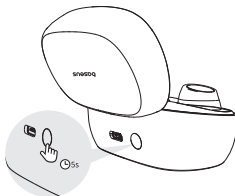
④ Pairing



- Open the charging case, take out and wear the earbuds.
- Tap Baseus Bowie MA20 in the Bluetooth device list.

⑤ Factory Reset

- Long press the charging case button on the back for 5 seconds, and the indicator will flash quickly for 3 times.



6 Button controls



- Noise Cancellation: Long press for 1 second
- Play/Pause: Double-tap
- Answer/Hang up: Double-tap
- Decline: Long press for 1 second
- Android Wake-Up or Siri voice assistant: Triple-tap

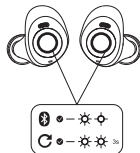
Instructions

Pairing mode:

One indicator fast blinks white, and one indicator slowly blinks white.

Restoration to factory defaults:

Indicators of both earphones fast blink white three times at the same time.



Support

1. Scan the QR code to download the app and bind the app with the earphones.
2. For FAQs, detailed user manual and more information, please visit <https://www.baseus.com/pages/support-center>.



Baseus App

Warnings

Improper use of the product can easily cause damage to the product or may endanger personal and property safety.

1. The battery is included in the product. Please avoid exposing your product to the sunlight, electric heater or similar overheating environments. Do not store the product in high temperature, strong light and strong magnetic places.
2. Do not keep it in other harsh environments such as fire source. Intense physical actions such as knocking, throwing, trampling on and squeezing etc. shall be avoided. Do not use it in case of expansion.
3. The ambient temperature of product is 0~45°C.
4. Inappropriate use of the product against this user manual or ignoring warnings can easily cause damage the product or may endanger personal and property safety. Consumer shall bear for all the consequences, to which our company will not assume any legal liability.
5. Decomposition of this product by non-professionals is strictly prohibited.
6. Do not use a load (electrical appliances) that exceeds the output current of this product. A circuit protection mechanism is built-in to automatically stop working if loads exceed.
7. Please use a clean cotton cloth to clean the charging contacts of earphones regularly to prevent it from failing to charge or turn on due to missing cleaning for a long time.
8. Do not put this product in water (or washing machine). If water enters the product, let it dry naturally before using it. Any damage resulted from water into the earphones caused by the consumers themselves, the responsibility falls to the consumers, where our company won't be able to provide any after-sales or return services.

Specifications

Name: Baseus True Wireless Earphones

Model No.: Baseus Bowie MA20

Material: ABS+PC

Version: V5.3

Communication distance: 10m

Music playing time: About 8 hours (volume at 70%, ANC off)

Playtime with a charging case: About 35~38 hours

Battery capacity: 50mAh/0.193Wh (earphones) 400mAh/1.52Wh (charging case)

Earphone rating input: DC5V~96mA

Charging case rating input: DC5V~400mA

Earphone rating consumption current :6mA

Charging case rating current consumption: 310mA

Fully charging time: About 1.5 hours

Frequency response range: 20Hz-20kHz

Charge interface: Type-C

Suitable for: Compatible with most of wireless devices

*The above data are measured by the Baseus laboratory, the actual use can be slightly different depending on the specific circumstances.

Content



Earphones charging case × 1



Earphones (L&R) × 2



Ear tip (L&R) × 4



Charging cable × 1



Warranty card × 1



Ear hooks (L&R) × 4



User manual × 1




It is hereby declared that Baseus Bowie MA20, a product model of Shenzhen Baseus Technology Co., Ltd., complies with the provisions of Directive 2014/53/EU, Directive 2011/65/EU. The full text of the EC Declaration of Conformity can be found on the following website: www.baseus.com



This equipment complies with the provisions of Directive 2012/19/EU, 2006/66/EC, 2013/56/EU. It is strictly forbidden to dispose of this equipment with ordinary trash. It must be recycled. This symbol indicates that the product shall not be treated as regular domestic trash, and must be delivered to a recycling center that is capable of recycling electronic and electrical equipment

Declaration on hazardous substances and elements contained in electronic products

Part Description	Hazardous substances and elements 					
	Lead (pb)	Mercury (Hg)	Cadmium (Cd)	Hexavalent chromium (Cr VI)	Polybrominated Biphenyls (PBB)	Polybrominated Biphenyl ethers (PBDE)
PCB	X	O	O	O	O	O
Plastic	O	O	O	O	O	O
Battery	O	O	O	O	O	O
Accessory	O	O	O	O	O	O
charging cable	X	O	O	O	O	O

This form is compiled in accordance with SJ/T 11364.

O: It indicates that the content of the harmful substance in all homogeneous materials of the component is below the limit specified in GB/T 26572 standard.

X: The content of harmful substances in at least one homogeneous material of this part exceeds the limit stipulated in GB/T 26572 standard.

Warm Tip: The 5-year icon refers to the "effective life of environmental protection", not the product quality assurance period. Electronic products all contain harmful substances such as lead, mercury and cadmium. Once they are overused, harmful substances may leak or mutate, cause pollution to the environment, or cause serious damage to people and property. The term of "environmental protection use" means that all electronic products will be required to use within this effective period. We will no longer be responsible for the quality of the products due to the safety risks that arise after the safe use period.



FR
**Cet appareil,
ses accessoires
et cordons se
recyclent**

**À DÉPOSER
EN MAGASIN**



ou

**À DÉPOSER
EN DÉCHÈTERIE**



**Points de collecte sur www.quefairedemesdechets.fr
Privilégiez la réparation ou le don de votre appareil !**



PAP

Raccolta carta



Warning



**Please follow the above safety instructions otherwise it will cause fire,
electric shock, damage or other injuries.**

Manufacturer: Shenzhen Baseus Technology Co., Ltd.

Add: 2nd Floor, Building B, Baseus Intelligence Park, No.2008, Xuegang Rd,
Gangtou Community, Bantian Street, Longgang District, Shenzhen

Hotline: +1 800 220 8056

Website: <https://www.baseus.com>

Official After-sales E-mail Address: care@baseus.com

PB4627Z_P0A1

1100007368

Designed by Baseus

Made in China